

Research Article

Cell-to-cell heterogeneity emerges as consequence of metabolic cooperation in a synthetic yeast community

Kate Campbell¹, Jakob Vowinkel¹ and Markus Ralser^{1,2}

¹ Department of Biochemistry and Cambridge Systems Biology Centre, University of Cambridge, United Kingdom

² The Francis Crick Institute, Mill Hill laboratory, The Ridgeway, Mill Hill, London, United Kingdom

Cells that grow together respond heterogeneously to stress even when they are genetically similar. Metabolism, a key determinant of cellular stress tolerance, may be one source of this phenotypic heterogeneity, however, this relationship is largely unclear. We used self-establishing metabolically cooperating (SeMeCo) yeast communities, in which metabolic cooperation can be followed on the basis of genotype, as a model to dissect the role of metabolic cooperation in cell-to-cell heterogeneity. Cells within SeMeCo communities showed to be highly heterogeneous in their stress tolerance, while the survival of each cell under heat or oxidative stress was strongly determined by its metabolic specialization. This heterogeneity emerged for all metabolite exchange interactions studied (histidine, leucine, uracil, and methionine) as well as oxidants (H₂O₂ and diamide) and heat stress treatments. In contrast, the SeMeCo community collectively showed to be similarly tolerant to stress as wild-type populations. Moreover, stress heterogeneity did not establish as direct consequence of the metabolic genotype (auxotrophic background) of the single cell, but was observed only for cells that cooperated according to their metabolic capacity. We therefore conclude that phenotypic heterogeneity and cell-to-cell differences in stress tolerance are emergent properties when cells cooperate in metabolism.

Received	04 MAR 2016
Revised	06 JUN 2016
Accepted	08 JUN 2016
Accepted article online	17 JUN 2016

Keywords: Heat stress · Metabolic cooperation · Oxidative stress · Self-establishing metabolically cooperating yeast community

1 Introduction

Metabolism and the stress response are two highly interdependent processes: metabolism determines the growth rate of cells, provides cofactors for the stress responsive machinery (i.e. nicotinamide adenine dinucleotide phosphate (NADPH) for antioxidant enzymes), and is a source of toxic or oxidizing molecules itself, while the stress response involves metabolic re-configuration [1–4]. A

prime example of the role of metabolism in stress situations is the glycolysis/pentose phosphate pathway (PPP) transition, which acts as a first line antioxidant system conserved from yeast to mammalian cells. Within seconds of contact to oxidative stress, cells temporarily block glycolysis and in parallel increase activity within the PPP [5]. This provides immediate protection for the cell due to the increased production of NADPH, which is then available for antioxidant enzymes, such as thioredoxin reductase and glutathione reductase, to regenerate one of the cell's principal antioxidant metabolites, reduced glutathione (GSH) [5–8]. Due to the broad importance of redox cofactors for antioxidant enzymes, many additional metabolic pathways that involve these cofactors also impact cellular stress tolerance, such as the Krebs cycle, the respiratory chain, the methionine, leucine and lysine biosynthetic pathways, the kynurenine pathway important for tryptophan degradation and NAD⁺ synthesis, and the polyamine pathway to name a few [9–15].

The stress tolerance of a cell community does not necessarily reflect the stress tolerance of its individual cell members however. Even when genetically homogeneous,

Correspondence: M. Ralser, mr559@cam.ac.uk, Tel +44 (0)1223 761346

Current addresses: Kate Campbell, Department of Biology and Biological Engineering, Chalmers University of Technology, Kemivägen 10, SE-412 96, Gothenburg, Sweden
Jakob Vowinkel, Biognosys AG Wagistrasse 25, CH-8952 Schlieren, Switzerland

Abbreviations: CFUs, colony forming units; mtGFP, mitochondrial localized green fluorescent protein; NADPH, nicotinamide adenine dinucleotide phosphate; PPP, pentose phosphate pathway; SeMeCo, self-establishing metabolically cooperating

co-growing cells establish substantial diversity, with some cells surviving and others dying upon application of the same perturbation [16–20]. Such heterogeneity can be non-genotypic and, by enabling bet hedging strategies, positively influence the survival of the community in stress situations [21, 22]. Phenotypic heterogeneity hence improves population fitness in a fluctuating environment [23]. For bacteria, the extreme tolerance to stress for a few cells within a community is classically referred to as persistence, with recent studies showing metabolism to play a critical role in this survival mechanism [24, 25]. Furthermore cells that persist against stress treatment themselves, exhibit cell-to-cell phenotypic heterogeneity [25]. The ability of cells to respond heterogeneously to stress consequently has a major impact on sterilization processes as well as efforts to combat microbial infection [26]. From a biotechnology perspective, phenotypic heterogeneity has been considered an exploitable cellular property. For instance, phenotypic heterogeneity has enabled the selection of progressively more stress tolerant cells over time, increasing yeast ethanol tolerance [27], or increasing tolerance to lignocellulose hydrolysates inhibitors and subsequently improving xylose fermentation [28]. Phenotypic heterogeneity can therefore improve population fitness in large scale bioreactor processes where environmental fluctuations occur as a result of transient concentration gradients [29]. Despite these promising avenues of research, phenotypic variability also gives rise to difficulties in controlling bioprocessing [30]. One cause of suboptimal productivity can be the presence of subpopulations exhibiting non-producer and low-producer phenotypes as a result of the metabolic state of the cell, such as its stage in the cell cycle or its interaction with other cells in the population [30, 31].

Phenotypic heterogeneity is by no means a speciality of single cell organisms. Chinese hamster ovary (CHO) cells, a commonly used mammalian cell line for therapeutic protein mass production, also exhibit phenotypic heterogeneity. CHO subclones isolated from their parental population exhibit interclonal heterogeneity, with differences in key attributes which may impact biomanufacturing processes [32]. Small metazoans such as *Caenorhabditis elegans*, also show to be phenotypically heterogeneous, implying that this cellular phenomenon is a common biological property [33].

Stochasticity or noise in gene expression are discussed as predominant molecular causes of this cellular heterogeneity [34–36]. However, alternative biochemical causes, such as cell-to-cell differences in metabolism, have begun to receive significant attention [22, 30, 37, 38]. To understand the role of metabolism in this process, it would be desirable to measure the metabolic exchange flux between individual cells and link this information with the phenotypic heterogeneity of the population. However, technical difficulties have dampened these efforts so far [39]. Subsequently there is a significant gap

in our understanding of what mechanisms are behind cell-to-cell metabolic heterogeneity, how they are associated with metabolism and how we may exploit them for clinical intervention, or for improving biotechnological processes.

The use of synthetic biological systems can be beneficial when it is hard to obtain observations under native conditions. We recently developed a synthetic system, termed self-establishing metabolically cooperating communities (SeMeCos) in which the metabolic role of a cell can be tracked based on its genotype [31]. This system starts from a single cell that grows into a progressively heterogeneous community, whose cellular members are increasingly dependent on metabolic cooperation for survival. We designed this system to study cell-to-cell metabolite exchange interactions that occur under normal physiological conditions between co-growing cells in budding yeast. These self-establishing communities are exploited here to gain insight into the role of metabolic cooperation in cells establishing stress resistance diversity at the single cell level. We report evidence that the metabolic role of a cell, which participates in a cooperating community, is a strong determinant of its survival chance in a given stress situation. Single-cell heterogeneity in regards to stress tolerance would hence be an emergent property when cells cooperate and specialize in metabolism.

2 Materials and methods

2.1 Yeast strains, plasmids and growth media

Yeast strains and plasmids have been described previously [31]. For microscopy analyses of uracil abundance in SeMeCo populations under stress, BY4741 with prototrophy restored by complementation with p423 (*HIS3*), pRS425 (*LEU2*), pRS411 (*MET15*) and p426-GPDpr-mCherry, to express the red fluorescent protein (RFP) in *URA3* cells, was used. To visualize mitochondrial morphology, mitochondrial networks were labelled and analyzed with the dual-marker plasmid pMitoLoc [40] (Addgene number: 58980) that labels mitochondria with green fluorescent protein (mtGFP) [40, 41].

Yeast was cultivated, if not otherwise indicated, at 30°C in minimal supplemented synthetic media (SM: YNB yeast nitrogen base, Sigma, 6.8 g/L), complete supplemented synthetic media (SC: CSM complete supplement mixture, MP Biomedicals; 0.56 g/L; YNB yeast nitrogen base, Sigma, 6.8 g/L), or rich media (YPD: 1% yeast extract, BactoTM; 2% peptone, BactoTM) with 2% glucose (Sigma) as the carbon source. Media recipes and amino acid compositions were used as previously published [42].

SeMeCo colonies were established as previously described [31]. In brief, a founding colony carrying four

plasmids that compensate for the genomic deficiency of *HIS3*, *LEU2*, *MET15* and *URA3* of BY4741 [43] was grown on minimal media, and re-diluted and re-spotted every 48 h for seven days to enable segregation of the plasmids.

2.2 Oxidative stress for individual auxotrophs and prototrophs

To compare the respective auxotroph tolerances to oxidants when there is complete media supplementation, prototrophic BY4741 and its single auxotrophy derivatives [42] were pre-cultured overnight in complete media (SC), a day culture was seeded at approx. 4.0×10^6 cells/mL in SC and cells were collected at mid-exponential growth phase. Strains were normalized to approx. 1.2×10^7 cells/mL in SC and spotted in 1:5 serial dilutions on SC solid media with H_2O_2 . Growth was then documented after three days incubation at 30°C.

To test the effect of nutrient supplementation on oxidant tolerance, prototrophic YSBN5 cells were cultured overnight in synthetic minimal (SM) media \pm supplementation of histidine (20 mg/L), leucine (60 mg/L), uracil (20 mg/L) and/ or methionine (20 mg/L). Stationary cells were normalized to approx. 1.8×10^7 cells/mL in H_2O and spotted in 1:5 serial dilutions on SM solid media matching the supplementation of the overnight culture $\pm H_2O_2$. Growth was then documented after three days incubation at 30°C.

2.3 Oxidative stress and heat shock for colony and metabotypes

To determine oxidant and heat tolerance for yeast strains, cells were pre-grown for 48 h on SM solid media to establish a giant colony. To determine total population's oxidant tolerance, colonies were re-suspended in H_2O and normalized to approx. 3.6×10^6 cells in 200 μ L SM and spotted in 1:5 serial dilutions on SM solid media supplemented with either diamide (Sigma) or H_2O_2 (Sigma). Growth was then documented after three days incubation at 30°C. To analyze total population heat tolerance, colonies were re-suspended in H_2O and diluted to approx. 4.5×10^6 cells in 250 μ L SM then subjected to 5 min of heat shock (30, 53 and 55°C) in a water bath. Lag phases were determined from growth curves using a model-richards fit from the R 'grofit' package [44].

To determine percentage cell viability after oxidant stress alongside varying nutrient supplementation, cells were normalized to approx. 2.4×10^3 in H_2O and plated on SC and drop out solid media (SC without either methionine, leucine, uracil or histidine) \pm diamide. Following three days incubation at 30°C, the number of colony forming units (CFUs) were automatically counted using Cell Profiler.

2.4 Mitochondrial morphology studies in super resolution

SeMeCo [31] colonies containing the pMitoLoc [40] marker were established for seven days by re-dilution and spotting once every 48 h, on SM solid media containing 100 μ g/mL nourseothricin (NAT; Werner BioAgents) to select for pMitoLoc. Prior to stress tests, cells were spotted and grown for 48 h on SM solid media and 100 μ g/mL NAT to establish a giant colony. Colonies were then re-suspended in H_2O and diluted to approx. 2.7×10^7 cells in 1.5 mL H_2O , and treated with H_2O_2 for 45 min at 30°C with shaking (750 rpm). Following H_2O_2 treatment, yeast cells were collected by centrifugation, washed in PBS and fixed using paraformaldehyde (PFA) solution (4 g/L PFA, 3.6% sucrose) for 20 min. Cells were then centrifuged and re-suspended in PBS containing 10 μ g/mL Calcofluor White (Sigma) and incubated at room temperature for 5 min. Cells were then washed twice with PBS and re-suspended in 20 μ L Vectashield mounting medium (Vector Labs). 1.5 μ L of suspension was then applied to poly-L-lysine coated microscope slides.

To quantify relative abundances of uracil genotypes within the colony population, with or without H_2O_2 treatment, we used conventional wide field fluorescence microscopy on an Olympus IX81 microscope (Deltavision, GE Healthcare) equipped with a 60x 1.42NA PlanApoN oil objective (Olympus). The filter sets used were TRITC for mCherry labelling (555/28 ex, 617/73 em) and DAPI for Calcofluor White (360/40 ex, 457/50 em). Images with a z-spacing of 200 nm were recorded with a CoolSNAP HQ2 CCD camera. Deconvolution was performed using Softworx software (GE Healthcare).

For mitochondrial morphological analysis of single cells with or without H_2O_2 treatment, super-resolution fluorescence microscopy was carried out using a Deltavision 3D-SIM OMX system (GE Healthcare) equipped with a 60x 1.4NA oil objective (Olympus), 405 nm (Calcofluor), 488 nm (GFP) and 594 nm (mCherry) laser lines, and the OMX Standard filter set drawer. Images were acquired in structured illumination mode using a z-spacing of 125 nm, and reconstructed using Softworx software as described in [40]. Images were cropped to contain one single cell and subjected to volumetric analysis of their mitochondrial network using Volocity software (Perkin Elmer), or analyzed in ImageJ using the MitoMap plugin [40]. For each cell, relative mitochondrial volumes (V_s) were calculated [40], and objects with $V_s < 20\%$ were considered fragmented.

2.5 Oxidative stress and heat shock for metabotypes

To investigate oxidant and heat shock tolerance for individual metabotypes, cells were first pre-grown for 48 h on SM solid media to establish giant colonies. Colonies were

then re-suspended in H_2O , and samples were normalized to approx. 4.5×10^7 cells/mL. For oxidative stress treatment, cells were plated at 1:100 000, to isolate individual CFUs, on SC solid media containing either no oxidant, diamide or H_2O_2 in the sublethal to lethal concentration range. CFUs on plates containing oxidant concentrations immediately less than plates with lethal oxidant concentration were picked for replica plating to determine cell metabolotypes. To elucidate individual metabolotype heat tolerances, normalized cells were exposed to heat shock at $60^\circ C$ at a range of incubation times and then plated at a 1:100 000 dilution on SC solid media. Viable cells at heat shock incubation time immediately less than the lethal incubation time were picked for replica plating to determine cell metabolotype.

3 Results

3.1 Cooperating yeast communities are composed of heterogeneously stress resistant cells

SeMeCo communities start with a metabolically competent (prototrophic) single cell that has several metabolic deficiencies (auxotrophies) complemented by plasmids containing the metabolic genes that are deleted in its genome. When the SeMeCo founder cell grows into a community, these plasmids are stochastically lost at a rate of ~2–4% per cell division so that, over time, the number of auxotrophic cells in the community increases. The resultant communities become progressively metabolically heterogeneous until a minimum number of metabolite producing cells, required to supply the community with the metabolites, is reached. SeMeCo's that share histidine, leucine, uracil and methionine are fully viable, and adopt metabolic capacities similar to wild-type cell communities, and survive on the basis of nutrient exchange occurring between up to 16 auxotrophic genotypes (metabotypes); (Fig. 1A) [31]. The wild type-like growth properties of SeMeCos allowed us to conclude that sharing of histidine, leucine, uracil and methionine metabolites is a natural property of yeast colonial growth [31]. In this manuscript, we exploit the fact that once segregation of a SeMeCo has progressed, one can deduce from the auxotrophic genotype of each single cell which of the four metabolites it produces for the community, and which metabolites it consumes from the pool of shared goods [31].

As metabolism is a key factor in stress tolerance, we questioned whether the exchange of histidine, leucine, uracil and methionine affects the survival chances of the cooperating cells in stress situations. We started by comparing the H_2O_2 tolerance of uracil consuming and uracil producing cells – when growing cooperatively in media lacking uracil – as these cell types were the largest complementary group of metabolite consuming and produc-

ing cells (Fig. 1A, ii). Uracil consuming cells were more sensitive to H_2O_2 than uracil producing cells: The higher the sublethal H_2O_2 concentration, the fewer uracil consuming cells were found to constitute SeMeCo (Fig. 1B). We corroborated a difference between uracil producers and uracil consumers by exploiting a morphological feature of mitochondrial networks that allowed us to compare the response of single cells during H_2O_2 treatment. Under normal growth conditions, mitochondria fuse to form large tubular networks, however, when cells are exposed to H_2O_2 they undergo fission into fragmented mitochondrial units (Fig. 1C, i and ii) [2, 45]. We made use of a recently developed strategy and mathematical framework (MitoLoc) to numerically express such changes in single cells [40]. The method makes use of mitochondrial localized GFP (mtGFP) [41] pictured on an OMX super resolution microscope [46] and calculates morphological features upon automated 3D reconstruction [40]. In order to apply the method, a SeMeCo community carrying the mitochondrial marker pMitoLoc was re-established. Without oxidant, the mitochondrial network of SeMeCo's uracil producing and consuming cells showed a similar degree of fragmentation (Fig. 1C, iii). At an increased H_2O_2 concentration, mitochondrial fission occurred in uracil producing but not in uracil consuming cells (Fig. 1C, iii). The activation of mitochondrial fission, an integral part of the H_2O_2 response, was hence dependent on whether the individual cell in SeMeCo was contributing or consuming uracil from the pool of shared goods.

The combinatorial loss of *HIS3*, *LEU2*, *MET15* or *URA3* results in 16 different metabolotypes. Not all of these genotypes are however capable of cooperating in SeMeCo, with only eight of the 16 genotypes demonstrating efficient cooperation in the community [31] (Fig. 1A, ii). The difference between the eight frequent, and eight rare genotypes was exploited to distinguish whether the stress response heterogeneity established as a consequence of the auxotrophic marker the cells contain, or as consequence of successful metabolic cooperation. In the former case, all 16 metabolotypes would be different in stress tolerance and in the latter case, differences would only occur between the eight successfully cooperating metabolotypes. We monitored the survival of all 16 metabolotypes following exposure to H_2O_2 , the thiol oxidizing compound diamide, or to heat stress, by using replica plating, and studied differences between rare and frequent metabolotypes (Fig. 2A). The process of replica plating was preferred over alternative methods such as FACS, as it enables (i) the identification of all 16 genotypes, (ii) the detection of cell survival, and finally (iii), whether cells retain colony forming capacity. All stress treatments affected the auxotrophic composition of SeMeCo (Fig. 2B, i) and had substantially diverse effects on the eight frequent metabolotypes (Fig. 2B, ii). For example, consistent with the microscopy results (Fig. 1), the most frequent cell type (consuming uracil), was depleted from SeMeCo upon H_2O_2 as well upon diamide exposure, how-

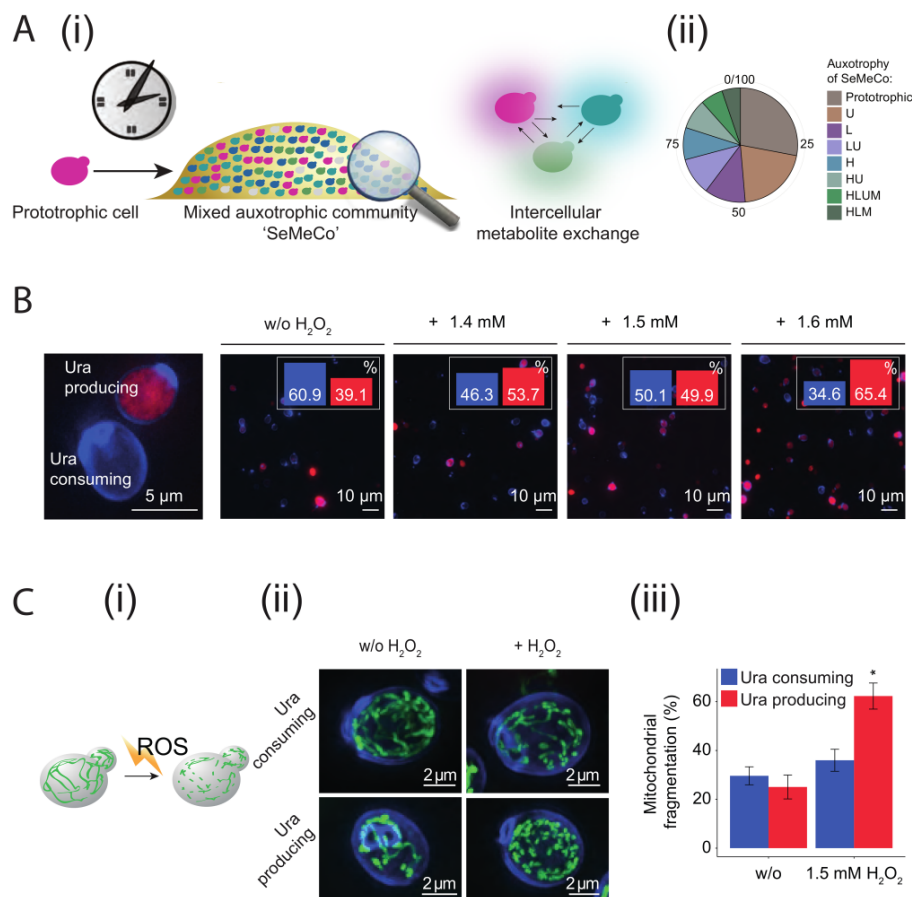


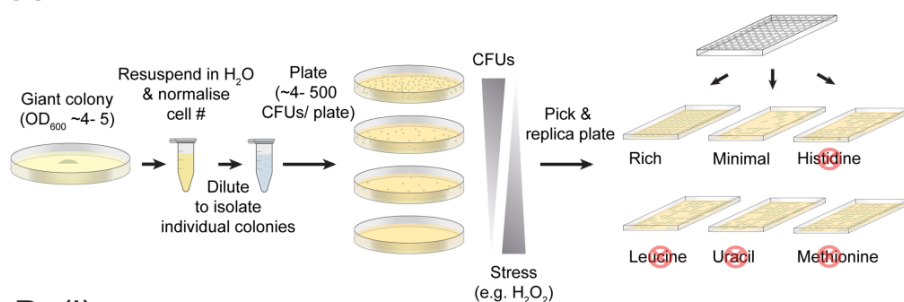
Figure 1. Metabolically cooperating synthetic yeast communities are composed of phenotypically heterogeneous cells. **(A)** (i) Scheme of a self-establishing metabolically cooperating community in *Saccharomyces cerevisiae* (SeMeCo), establishing from an initially prototrophic founder over time. While the colony maintains growth on minimal media, single cells within SeMeCo progressively lose prototrophy by the stochastic loss of complementing marker plasmids, and continue growth only if they can share the essential metabolites. (ii) Auxotrophic cell types (metabotypes) present in a SeMeCo community established using *HIS3*, *LEU2*, *MET15* and *URA3* as markers. Formed of a total of 16 genotypes, only eight metabotypes are successful cooperators and form the community. Eight rare metabotypes (unsuccessful cooperators), in total contributing to less than <5% of population, are not represented. **(B)** Metabolic cooperation diverges stress tolerance of uracil producing and consuming cells. Uracil consumers within a SeMeCo grown on minimal media, are depleted upon H_2O_2 treatment, as determined by fluorescence microscopy, $n = 1492$. Bar charts inset: percentage of uracil consuming (blue, Calcofluor White (CFW) cell wall stained) and producing cells (red, expressing mCherry linked to *URA3*). **(C)** Mitochondrial morphology upon H_2O_2 treatment distinguishes uracil consuming and producing cells within a SeMeCo community grown on minimal media. **(i)** Scheme of mitochondrial network disintegration (fission) following exposure to H_2O_2 . **(ii)** Super-resolution fluorescence microscopy image of the fluorescently labelled mitochondrial network, using pMitoLoc, for both uracil consuming and uracil producing cells within SeMeCo. Cell walls are stained with CFW (blue). **(iii)** Exposure to H_2O_2 leads to mitochondrial fission in the uracil producing, but not in uracil consuming metabotypes ($n > 16$, error bars = SEM, * $p < 0.01$).

ever, showed increased persistence upon heat stress (Fig. 2B, ii). The second most frequent metabotype (consuming leucine) instead was heat and H_2O_2 sensitive, but resistant to diamide, while the third most frequent metabotype (consuming leucine and uracil) was sensitive to all three conditions (Fig. 2B, ii). Importantly, none of the frequent metabotypes showed to be consistently stress resistant against all three stress conditions. This shows that the survival of metabolically specialized cells within the synthetic community is specific to a given stress situation.

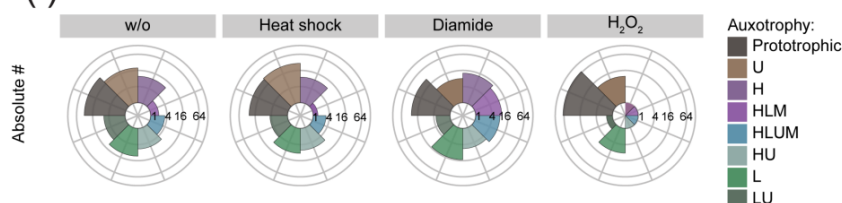
Remarkably, no such diversification was observed for the eight rare metabotypes (unsuccessful cooperators), despite these cells being composed of the same four

auxotrophic markers (Fig. 2B, ii). A limitation in the analysis of the rare metabotypes is certainly that their collective total remains below 5% of the total population (heat: $n = 6/185$, diamide: $n = 14/282$ and H_2O_2 : $n = 0/270$, versus no stress: $n = 12/557$ genotyped cells), for which reason stress sensitive phenotypes may be missed. These results do however confirm that none of the rare metabotypes were resistant to any of the tested stress conditions. In other words, the oxidant and heat resistance of a cell within SeMeCo did not simply correlate with the four auxotrophic marker mutations; heterogeneity in stress resistance was only observed for the metabotypes that successfully cooperated within the community.

A



B (i)



(ii)

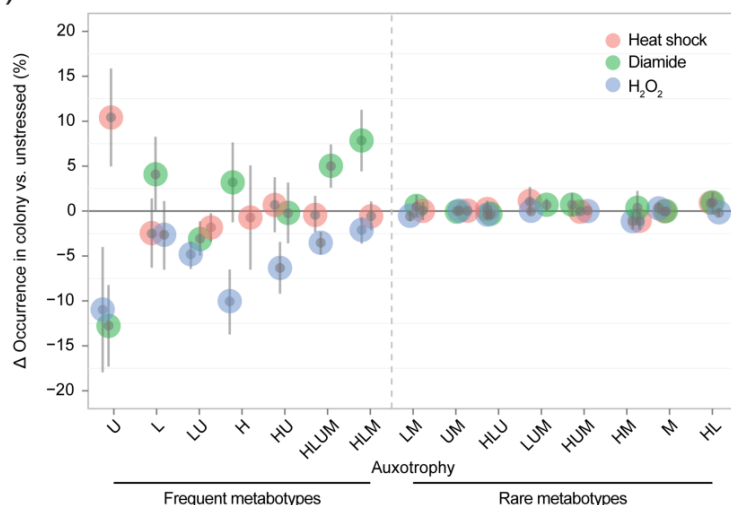


Figure 2. Phenotypic diversity establishes for multiple stress conditions, but only for cooperating metatypes. **(A)** Scheme for determining individual metatype's stress tolerance in SeMeCo giant colonies, via replica plating. **(B)** (i) The metatype composition of SeMeCo changes upon exposure to heat (60°C for 50 seconds, $n = 185$), to diamide (1.2 mM, $n = 282$) or to H₂O₂ (0.2 mM, $n = 270$ genotyped cells). (ii) Relative change to unchallenged cells (from x-axis when $\gamma = 0$) of individual metatype's survival upon exposure of SeMeCo to heat, diamide or H₂O₂, $n = 1295$ genotyped cells, error bars = \pm standard deviation. Metatypes are sorted (from left to right), according to their frequency in SeMeCo before the stress treatment [31]. Diversification is detected only for the frequent metatypes.

3.2 Auxotrophic genotype affects stress resistance indirectly

The clear difference between the frequent and rare metatypes in stress heterogeneity, despite containing the same auxotrophic markers, suggests that the auxotrophic background influences stress tolerance depending on the cells, nutrient uptake profile, but not according to the presence or absence of the marker genes per se. To test this, we exploited the observation that supplemented yeast cells, even when able to synthesize histidine, leucine, uracil, and methionine (genetically prototrophic), take up these four metabolites. We reported previously that uptake by prototrophs occurs at a rate comparable to uptake by auxotrophic cells unable to synthesize these four metabolites, implying that uptake fully meets cellular demands [31, 47]. Assayed by spot-

testing on synthetic complete (SC) media, supplemented with the oxidant hydrogen peroxide (H₂O₂), all histidine, leucine, uracil and methionine auxotrophs displayed a similar H₂O₂ tolerance compared to the prototrophic strain (Fig. 3A). This confirms that these strains, despite their different auxotrophic backgrounds, will have largely similar stress tolerances as long as they have access to the four metabolites.

Conversely, we then tested the H₂O₂ tolerance of YSN5 wild-type yeast upon different supplementation of histidine, leucine, uracil and methionine. Unlike the homogeneous stress tolerance of the auxotrophs when similarly supplemented, the differently supplemented prototrophs showed heterogeneous resistance (Fig. 3B). The difference in stress tolerance for the auxotrophs thus predominantly originates from their different metabolic activity in the sense of either taking up or self-synthesiz-

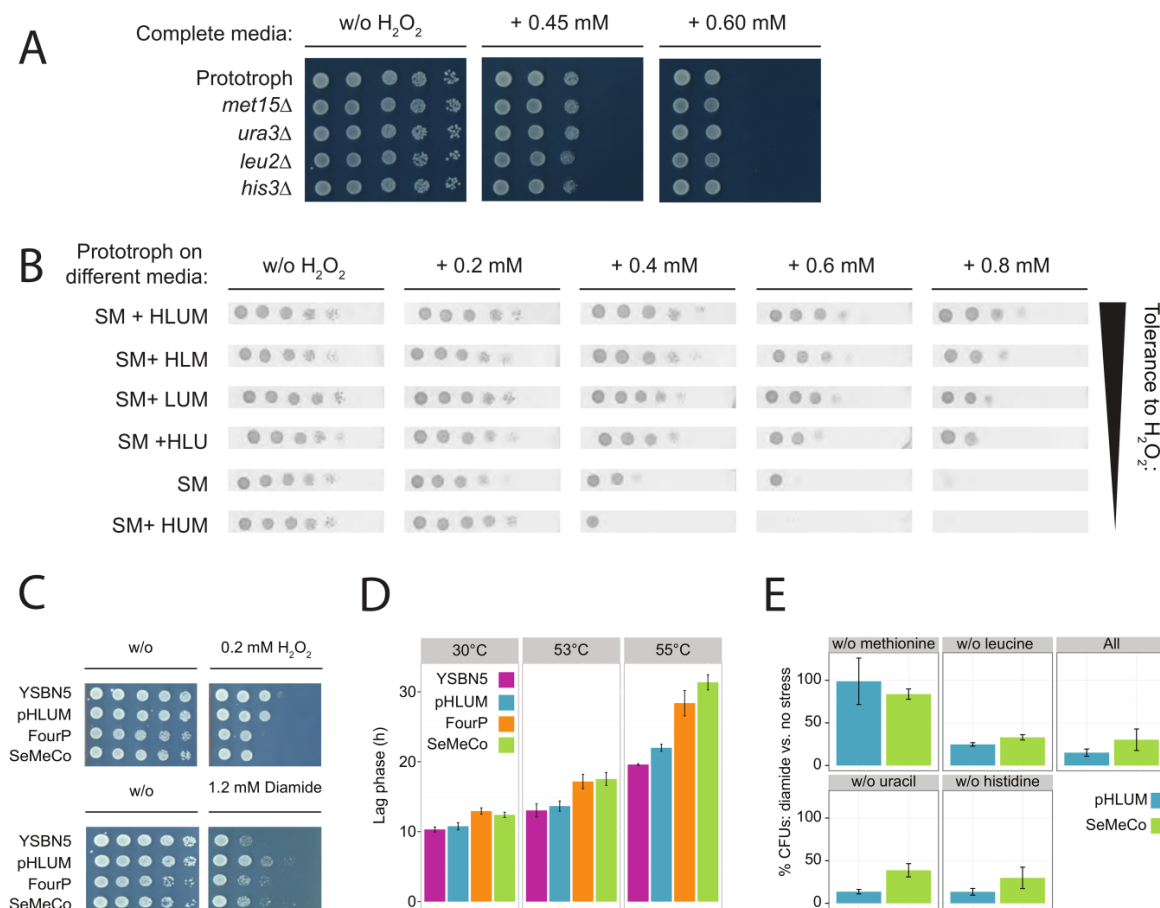


Figure 3. On the community level, SeMeCo and wild-type colonies possess similar stress tolerances. **(A)** Auxotrophic cells similarly tolerate H_2O_2 when fully supplemented. Spot-testing shows H_2O_2 tolerance of methionine (*met15Δ*), uracil (*ura3Δ*), leucine (*leu2Δ*), and histidine (*his3Δ*) auxotrophs is no different to that of prototrophic cells when cells are grown on synthetic complete (SC) agar media ($n = 3$). **(B)** Prototrophs display a heterogeneous H_2O_2 tolerance when media supplementation of histidine, leucine, uracil, and methionine is varied. The color of the spot test images has been inverted, to facilitate visualization of cell survival across the different plates ($n = 3$). **(C)** Oxidant tolerance of a genomically prototrophic BY4741 [43] derivative (YSBN5 [53]), BY4741 rendered prototrophic with the pHLUM plasmid (pHLUM [42]), BY4741 rendered prototrophic with the same plasmids as used to construct SeMeCo (FourP) and SeMeCo [31], as determined with a spotting assay on minimal (SM) solid media containing H_2O_2 (upper panel) and diamide (lower panel). **(D)** Heat tolerance of YSBN5, pHLUM, FourP, and SeMeCo colonies as determined by measuring time to resume growth (lag phase) after 5 min exposure to 30, 53 and 55°C. $n = 3$, error bars = \pm standard deviation. **(E)** Oxidant tolerance of single cells constituting pHLUM and SeMeCo colonies, when plated on media with varying amino acid supplementation. Survival is determined as percentage colony forming units (CFUs) that establish on diamide containing plates versus no oxidant being present.

ing a given metabolite, but not directly from the absence or presence of the auxotrophic marker gene.

3.3 On the community level, the heterogeneously composed SeMeCos behave similarly to wild-type communities

Not only the individual cells in SeMeCos, but also single cells in yeast wild-type communities are heterogeneous in their stress resistance [22, 48]. Considering cooperative metabolite exchange as an inherent property of yeast colonial growth [31], we thus questioned to what extent the heterogeneously composed SeMeCo communities did, or did not, behave like typical yeast communities in

stress tolerance. This would indicate that the stress heterogeneity on the single cell level, emerges as a result of basic yeast metabolic properties, and is not an artificial property of the SeMeCo system. First, spot tests were used to assess the resistance of SeMeCos in comparison to wild-type yeast colonial communities to the hydroperoxide H_2O_2 or the thiol oxidizing compound diamide (Fig. 3C), while growth following heat exposure, was used to assess temperature resistance (Fig. 3D). The tolerance of SeMeCo against both oxidants did not differ significantly to at least one prototrophic colony (Fig. 3C). Heat resistance instead was normal at 53°C but slightly impaired at 55°C for the SeMeCo cells (Fig. 3D). At least to oxidant exposure, SeMeCos were similarly resistant as

wild-type communities. We therefore questioned to what extent this phenotype is reflected on the single cell level. We found largely similar survival numbers, or a slight better performance of the SeMeCo community in some conditions, of individual cells in stressed SeMeCo and wild-type colonies as determined by measuring colony-forming capacity (CFUs) upon oxidant exposure (Fig. 3E). Interestingly, wild-type and SeMeCo communities reacted similarly to each other, and stronger, upon a change in uracil, histidine, leucine and methionine supplementation. Predominant effects were obtained when comparing media with and without methionine, shown to modulate stress resistance over the pentose phosphate pathway [15]. Therefore, despite comparing a native yeast community with a SeMeCo community, where metabolic heterogeneity is synthetically tracked in a mostly auxotrophically composed and heterogeneous community, both populations possessed similar survival chances. This result implies that the metabolism-dependency of cellular heterogeneity is a native property of yeast communities.

4 Discussion

When cells co-grow in proximity, they exchange an array of metabolites. For example, cells within *Saccharomyces cerevisiae* colonies are surrounded by an intra-colony space rich in metabolites ('the intra-colony exometabolome'), containing amino acids and nucleotides. As these metabolites are exchanged at growth relevant quantities, this exometabolome can be exploited by cells to specialize in metabolism [31]. Indeed, for several metabolites including histidine, leucine, uracil or methionine, the yeast cells possess an uptake over self-synthesis preference, so that they readily exploit an available exometabolome to support their metabolic needs [31, 47]. As metabolism has a strong and well-established biochemical influence on oxidative and heat stress resistance [5, 15, 49, 50], it hence seems likely that such metabolic specialization is implicated in single-cell heterogeneity as observed in stress situations [17, 22, 51]. Due to the lack of enabling technologies for tracking metabolite exchange fluxes between single cells, this relationship between metabolism and phenotypic heterogeneity has remained, so far, largely unexplored.

We used self-establishing communities as a synthetic system where the metabolic function of a single cell can be identified on the basis of its auxotrophic background, to study stress heterogeneity in yeast communities [31]. While one cannot directly prove with the SeMeCo system whether stress heterogeneity in normal yeast colonies is a consequence of metabolite exchange, it can be demonstrated that when cells cooperate in metabolism, stress heterogeneity emerges as a consequence of metabolic specialization. Importantly, we could distinguish between the phenotypic heterogeneity caused by the auxotrophic

marker genes, and that of the metabolite exchange interactions within SeMeCo. We find the latter to be essential for heterogeneity to establish. Further, wild-type yeast communities and SeMeCos, whilst heterogeneously composed, were shown to largely corresponded to one another on the colony and single cell survival level, implying that stress heterogeneity that establishes as a consequence of metabolic specialization is a normal property of communal cell growth.

Metabolic exchange activity hence adds to noise in gene expression or somatic mutations [34, 35, 52] as a cause of phenotypic heterogeneity at the single cell level. This finding is important for biotechnology, as cooperation may be targeted to optimize metabolic engineering strategies. By targeting specific metabolic pathways and feedback mechanisms involved in cell-to-cell cooperation, it may be possible to enhance cell viability, titer and productivity. Furthermore, these findings could provide a new perspective towards medical research concerning anti-cancer or antibiotic therapies, where persisting cells compromise therapy success. While both noise in gene expression and somatic mutations are difficult to be targeted pharmacologically, cellular heterogeneity that emerges as a consequence of metabolic cooperativity could be prevented with intelligently designed metabolic inhibitors.

We are grateful for the support of N. Lawrence of the Gordon Institute Imaging Facility (University of Cambridge) in super-resolution microscopy, and we thank the Wellcome Trust (RG 093735/Z/10/Z) and the ERC (Starting grant 260809) for funding. M.R. is a Wellcome Trust Research Career Development and Wellcome-Beit Prize fellow.

The authors have declared no conflict of interest.

5 References

- [1] Brauer, M. J., Huttenhower, C., Airoidi, E. M., Rosenstein, R. et al., Coordination of growth rate, cell cycle, stress response, and metabolic activity in yeast. *Mol. Biol. Cell* 2008, 19, 352–367.
- [2] Breitenbach, M., Rinnerthaler, M., Hartl, J., Stincone, A. et al., Mitochondria in ageing: There is metabolism beyond the ROS. *FEMS Yeast Res.* 2014, 14, 198–212.
- [3] Pollak, N., Dolle, C., Ziegler, M., Dölle, C. et al., The power to reduce: Pyridine nucleotides – small molecules with a multitude of functions. *Biochem. J.* 2007, 402, 205–218.
- [4] Stincone, A., Prigione, A., Cramer, T., Wamelink, M. M. C. et al., The return of metabolism: Biochemistry and physiology of the pentose phosphate pathway. *Biol. Rev. Cambridge Philos. Soc.* 2015, 90, 927–963.
- [5] Ralser, M., Wamelink, M. M., Kowald, A., Gerisch, B. et al., Dynamic rerouting of the carbohydrate flux is key to counteracting oxidative stress. *J. Biol.* 2007, 6, 10.

- [6] Kuehne, A., Emmert, H., Soehle, J., Winnefeld, M. et al., Acute activation of oxidative pentose phosphate pathway as first-line response to oxidative stress in human skin cells. *Mol. Cell* 2015, 59, 359–371.
- [7] Peralta, D., Bronowska, A. K., Morgan, B., Dóka, É. et al., A proton relay enhances H₂O₂ sensitivity of GAPDH to facilitate metabolic adaptation. *Nat. Chem. Biol.* 2015, 11, 156–163.
- [8] Ralser, M., Wamelink, M. M. C., Latkolik, S., Jansen, E. E. W. et al., Metabolic reconfiguration precedes transcriptional regulation in the antioxidant response. *Nat. Biotechnol.* 2009, 27, 604–605.
- [9] Kim, J.-N., Jeong, Y., Yoo, J. S., Roe, J.-H. et al., Genome-scale analysis reveals a role for NdgR in the thiol oxidative stress response in *Streptomyces coelicolor*. *BMC Genomics* 2015, 16, 116.
- [10] Miller-Fleming, L., Olin-Sandoval, V., Campbell, K., Ralser, M., Remaining Mysteries of Molecular Biology: The Role of Polyamines in the Cell. *J. Mol. Biol.* 2015.
- [11] O'Doherty, P. J., Lyons, V., Tun, N. M., Rogers, P. J. et al., Transcriptional and biochemical evidence for the role of lysine biosynthesis against linoleic acid hydroperoxide-induced stress in *Saccharomyces cerevisiae*. *Free Radical Res.* 2014, 48, 1454–1461.
- [12] Petti, A. A., Crutchfield, C. A., Rabinowitz, J. D., Botstein, D., Survival of starving yeast is correlated with oxidative stress response and nonrespiratory mitochondrial function. *Proc. Natl. Acad. Sci. USA* 2011, 108, E1089–E1098.
- [13] Sahm, F., Oezen, I., Opitz, C. A., Radlwimmer, B. et al., The endogenous tryptophan metabolite and NAD⁺ precursor quinolinic acid confers resistance of gliomas to oxidative stress. *Cancer Res.* 2013, 73, 3225–3234.
- [14] Tretter, L., Adam-Vizi, V., Inhibition of Krebs cycle enzymes by hydrogen peroxide: A key role of [alpha]-ketoglutarate dehydrogenase in limiting NADH production under oxidative stress. *J. Neurosci.* 2000, 20, 8972–8979.
- [15] Campbell, K., Vowinckel, J., Keller, M. A., Ralser, M., Methionine metabolism alters oxidative stress resistance via the pentose phosphate pathway. *Antioxid. Redox Signal* 2015, 24, 543–547.
- [16] Avery, S. V., Microbial cell individuality and the underlying sources of heterogeneity. *Nat. Rev. Microbiol.* 2006, 4, 577–587.
- [17] Holland, S. L., Reader, T., Dyer, P. S., Avery, S. V., Phenotypic heterogeneity is a selected trait in natural yeast populations subject to environmental stress. *Environ. Microbiol.* 2014, 16, 1729–1740.
- [18] Labhsetwar, P., Cole, J. A., Roberts, E., Price, N. D. et al., Heterogeneity in protein expression induces metabolic variability in a modeled *Escherichia coli* population. *Proc. Natl. Acad. Sci. USA* 2013, 110, 14006–14011.
- [19] Ackermann, M., A functional perspective on phenotypic heterogeneity in microorganisms. *Nat. Rev. Microbiol.* 2015, 13, 497–508.
- [20] Pilbrough, W., Munro, T. P., Gray, P., Intracolonial protein expression heterogeneity in recombinant CHO cells. *PLoS One* 2009, 4, e8432.
- [21] Balaban, N. Q., Merrin, J., Chait, R., Kowalik, L. et al., Bacterial persistence as a phenotypic switch. *Science* 2004, 305, 1622–1625.
- [22] Levy, S. F., Ziv, N., Siegal, M. L., Bet hedging in yeast by heterogeneous, age-correlated expression of a stress protectant. *PLoS Biol.* 2012, 10, e1001325.
- [23] Thattai, M., van Oudenaarden, A., Stochastic gene expression in fluctuating environments. *Genetics* 2004, 167, 523–530.
- [24] Amato, S. M., Fazen, C. H., Henry, T. C., Mok, W. W. K. et al., The role of metabolism in bacterial persistence. *Front. Microbiol.* 2014, 5, 70.
- [25] Amato, S. M., Brynildsen, M. P., Persister Heterogeneity Arising from a Single Metabolic Stress. *Curr. Biol.* 2015, 25, 2090–2098.
- [26] Gefen, O., Balaban, N. Q., The importance of being persistent: Heterogeneity of bacterial populations under antibiotic stress. *FEMS Microbiol. Rev.* 2009, 33, 704–717.
- [27] Cakar, Z. P., Seker, U. O. S., Tamerler, C., Sonderegger, M. et al., Evolutionary engineering of multiple-stress resistant *Saccharomyces cerevisiae*. *FEMS Yeast Res.* 2005, 5, 569–578.
- [28] Pereira, S. R., Sánchez I Nogué, V., Frazão, C. J. R., Serafim, L. S. et al., Adaptation of *Scheffersomyces stipitis* to hardwood spent sulfite liquor by evolutionary engineering. *Biotechnol. Biofuels* 2015, 8, 50.
- [29] Delvigne, F., Goffin, P., Microbial heterogeneity affects bioprocess robustness: Dynamic single-cell analysis contributes to understanding of microbial populations. *Biotechnol. J.* 2014, 9, 61–72.
- [30] Delvigne, F., Zune, Q., Lara, A. R., Al-Soud, W. et al., Metabolic variability in bioprocessing: Implications of microbial phenotypic heterogeneity. *Trends Biotechnol.* 2014, 32, 608–616.
- [31] Campbell, K., Vowinckel, J., Müller, M., Malmshiemer, S. et al., Self-establishing communities enable cooperative metabolite exchange in a eukaryote. *Elife* 2015, 4, e09943.
- [32] Davies, S. L., Lovelady, C. S., Grainger, R. K., Racher, A. J. et al., Functional heterogeneity and heritability in CHO cell populations. *Biotechnol. Bioeng.* 2013, 110, 260–274.
- [33] Casanueva, M. O., Burga, A., Lehner, B., Fitness trade-offs and environmentally induced mutation buffering in isogenic *C. elegans*. *Science* 2012, 335, 82–85.
- [34] Elowitz, M. B., Levine, A. J., Siggia, E. D., Swain, P. S., Stochastic gene expression in a single cell. *Science* 2002, 297, 1183–1186.
- [35] Rosenfeld, N., Young, J. W., Alon, U., Swain, P. S. et al., Gene regulation at the single-cell level. *Science* 2005, 307, 1962–1965.
- [36] Raj, A., van Oudenaarden, A., Nature, nurture, or chance: Stochastic gene expression and its consequences. *Cell* 2008, 135, 216–226.
- [37] van Heerden, J. H., Wortel, M. T., Bruggeman, F. J., Heijnen, J. J. et al., Lost in transition: Start-up of glycolysis yields subpopulations of nongrowing cells. *Science* 2014, 343, 1245114.
- [38] Sumner, E. R., Avery, A. M., Houghton, J. E., Robins, R. A. et al., Cell cycle- and age-dependent activation of Sod1p drives the formation of stress resistant cell subpopulations within clonal yeast cultures. *Mol. Microbiol.* 2003, 50, 857–870.
- [39] Schmidt, A. M., Fagerer, S. R., Jefimovs, K., Buettner, F. et al., Molecular phenotypic profiling of a *Saccharomyces cerevisiae* strain at the single-cell level. *Analyst* 2014, 139, 5709–5717.
- [40] Vowinckel, J., Hartl, J., Butler, R., Ralser, M., MitoLoc: A method for the simultaneous quantification mitochondrial network morphology and membrane potential in single cells. *Mitochondrion* 2015, 24, 77–86.
- [41] Westermann, B., Neupert, W., Mitochondria-targeted green fluorescent proteins: Convenient tools for the study of organelle biogenesis in *Saccharomyces cerevisiae*. *Yeast* 2000, 16, 1421–1427.
- [42] Müller, M., Capuano, F., Pir, P., Christen, S. et al., A prototrophic deletion mutant collection for yeast metabolomics and systems biology. *Nat. Biotechnol.* 2012, 30, 1176–1178.
- [43] Brachmann, C. B., Davies, A., Cost, G. J., Caputo, E. et al., Designer deletion strains derived from *Saccharomyces cerevisiae* S288C: A useful set of strains and plasmids for PCR-mediated gene disruption and other applications. *Yeast* 1998, 14, 115–132.
- [44] Kahm, M., Hasenbrink, G., Lichtenberg-Frate, H., Ludwig, J. et al., Grofit: Fitting biological growth curves. *J. Stat. Software* 2010, 33, 1–21.
- [45] Wu, S., Zhou, F., Zhang, Z., Xing, D., Mitochondrial oxidative stress causes mitochondrial fragmentation via differential modulation of mitochondrial fission-fusion proteins. *FEBS J.* 2011, 278, 941–954.
- [46] Dobbie, I. M., King, E., Parton, R. M., Carlton, P. M. et al., OMX: A new platform for multimodal, multichannel wide-field imaging. *Cold Spring Harbor Protoc.* 2011, 2011, 899–909.
- [47] Stahl, N., James, U., Amino acid permeases and their influence on flavour compounds in beer. *Brewing Sci. Monatsschr. Brauwiss.* 2014, 67, 120–127.

- [48] Bishop, A. L., Rab, F. A., Sumner, E. R., Avery, S. V, Phenotypic heterogeneity can enhance rare-cell survival in “stress-sensitive” yeast populations. *Mol. Microbiol.* 2007, **63**, 507–520.
- [49] Morano, K. A., Grant, C. M., Moye-Rowley, W. S., The response to heat shock and oxidative stress in *Saccharomyces cerevisiae*. *Genetics* 2012, **190**, 1157–1195.
- [50] Grüning, N.-M. M., Lehrach, H., Ralser, M., Regulatory crosstalk of the metabolic network. *Trends Biochem. Sci.* 2010, **35**, 220–227.
- [51] Sumner, E. R., Avery, S. V, Phenotypic heterogeneity: Differential stress resistance among individual cells of the yeast *Saccharomyces cerevisiae*. *Microbiology* 2002, **148**, 345–351.
- [52] Newman, J. R. S., Ghaemmaghami, S., Ihmels, J., Breslow, D. K. et al., Single-cell proteomic analysis of *S. cerevisiae* reveals the architecture of biological noise. *Nature* 2006, **441**, 840–846.
- [53] Canelas, A. B., Harrison, N., Fazio, A., Zhang, J. et al., Integrated multilaboratory systems biology reveals differences in protein metabolism between two reference yeast strains. *Nat. Commun.* 2010, **1**, 145.



Cover illustration

This regular issue of BTJ includes articles on bioprocess engineering and biochemical engineering. Also it contains two special articles to the topic "Eukaryotic Synthetic Biology". The cover shows mouse embryonic stem cells proliferating in a microfluidic culture device capable of monitoring specific oxygen uptake rates in real time. Monitoring occurs without disruption of the cell culture and label-free. Image is provided by Alexandre Super, Nicolas Jaccard, Marco Paulo Cardoso Marques, Rhys Jarred Macown, Lewis D. Griffin, Farlan Singh Veraitch and Nicolas Szita authors of "Real-time monitoring of specific oxygen uptake rates of embryonic stem cells in a microfluidic cell culture device" (<http://dx.doi.org/10.1002/biot.201500479>).

Biotechnology Journal – list of articles published in the September 2016 issue.

Forum

Tailor-made biocatalysts enzymes for the fine chemical industry in China

Yu Jiang, Rongsheng Tao and Sheng Yang

<http://dx.doi.org/10.1002/biot.201500682>

Commentary

Omics insights into production-scale bioreactors

Susan T. Sharfstein

<http://dx.doi.org/10.1002/biot.201600338>

Review

Continuous counter-current chromatography for capture and polishing steps in biopharmaceutical production

Fabian Steinebach, Thomas Müller-Späth and Massimo Morbidelli

<http://dx.doi.org/10.1002/biot.201500354>

Biotech Method

Facile construction of random gene mutagenesis library for directed evolution without the use of restriction enzymes in *Escherichia coli*

Jae-Eung Kim, Rui Huang, Hui Chen, Chun You and Y.-H. Percival Zhang

<http://dx.doi.org/10.1002/biot.201600121>

Biotech Method

Augmenting Chinese hamster genome assembly by identifying regions of high confidence

Nandita Vishwanathan, Arpan A. Bandyopadhyay, Hsu-Yuan Fu, Mohit Sharma, Kathryn C. Johnson, Joann Mudge, Thiruvarangan Ramaraj, Getiria Onsongo, Kevin A. T. Silverstein, Nitya M. Jacob, Huong Le, George Karypis and Wei-Shou Hu

<http://dx.doi.org/10.1002/biot.201500455>

Research Article

The MYpop toolbox: Putting yeast stress responses in cellular context on single cell and population scales

Thomas Spiesser, Clemens Kühn, Marcus Krantz and Edda Klipp

<http://dx.doi.org/10.1002/biot.201500344>

Research Article

Cell-to-cell heterogeneity emerges as consequence of metabolic cooperation in a synthetic yeast community

Kate Campbell, Jakob Vowinckel and Markus Ralser

<http://dx.doi.org/10.1002/biot.201500301>

Research Article

Real-time monitoring of specific oxygen uptake rates of embryonic stem cells in a microfluidic cell culture device

Alexandre Super, Nicolas Jaccard, Marco Paulo Cardoso Marques, Rhys Jarred Macown, Lewis D. Griffin, Farlan Singh Veraitch and Nicolas Szita

<http://dx.doi.org/10.1002/biot.201500479>

Research Article

Combined metabolomics and proteomics reveals hypoxia as a cause of lower productivity on scale-up to a 5000-liter CHO bioprocess

Yuanwei Gao, Somak Ray, Shujia Dai, Alexander R. Ivanov, Nicholas R. Abu-Absi, Amanda M. Lewis, Zhuangrong Huang, Zizhuo Xing, Michael C. Borys, Zheng Jian Li and Barry L. Karger

<http://dx.doi.org/10.1002/biot.201600030>

Research Article

Porting the synthetic D-glucaric acid pathway from *Escherichia coli* to *Saccharomyces cerevisiae*

Amita Gupta, Michael A. Hicks, Shawn P. Manchester and Kristala L. J. Prather

<http://dx.doi.org/10.1002/biot.201500563>

Research Article

Production of a tumor-targeting antibody with a human-compatible glycosylation profile in *N. benthamiana* hairy root cultures

Chiara Lonoce, Reda Salem, Carla Marusic, Philippe V. Jutras, Andrea Scaloni, Anna Maria Salzano, Sergio Lucretti, Herta Steinkellner, Eugenio Benvenuto and Marcello Donini

<http://dx.doi.org/10.1002/biot.201500628>

Research Article

Elucidation of ethanol tolerance mechanisms in *Saccharomyces cerevisiae* by global metabolite profiling

Sooah Kim, Jungyeon Kim, Ju Hwan Song, Young Hoon Jung, Il-Sup Choi, Wonja Choi, Yong-Cheol Park, Jin-Ho Seo and Kyoung Heon Kim

<http://dx.doi.org/10.1002/biot.201500613>

Research Article

Enabling xylose utilization in *Yarrowia lipolytica* for lipid production

Haibo Li and Hal S. Alper

<http://dx.doi.org/10.1002/biot.201600210>